

Plow & Hearth®

#12435 Small Electric Stove



User Manual

Please Retain For Future Reference

Description

Your electrical fireplace provides you with the comfortable heat and ambiance of a wood stove without the additional work.

Safety Instructions

Please read all instructions carefully before using this product.

- ◆ Make sure that the voltage rating label on the type plate corresponds to your main voltage. If not see your retailer and do not connect the appliance.
- ◆ Never use the appliance unsupervised.
- ◆ Turn stove off if you have to leave the heated area.
- ◆ Keep out of reach of children; do not allow children to operate.
- ◆ Only use the appliance for domestic purposes and in the way indicated in these instructions.
- ◆ From time to time check the cord for damages. Never use the appliance if the cord or any part of the appliance shows any signs of damage.
- ◆ Make sure the connection cord does not touch any hot surfaces.
- ◆ Do not cover the stove.
- ◆ Keep stove at least 6 inches from walls and other objects to support good air circulation.
- ◆ Never immerse the product in water or other liquids for any reasons..
- ◆ Do not use outdoors.
- ◆ Do not operate with wet hands.
- ◆ Never use on or near hot surfaces.
- ◆ Never move the stove by pulling the cord.
- ◆ Before cleaning the appliance, make sure it is unplugged from power and completely cooled.
- ◆ Do not clean with abrasive chemicals.
- ◆ Never use accessories that are not recommended or supplied by the manufacturer. It could cause danger to the user or damage to the appliance
- ◆ Do not place directly under electric outlet.

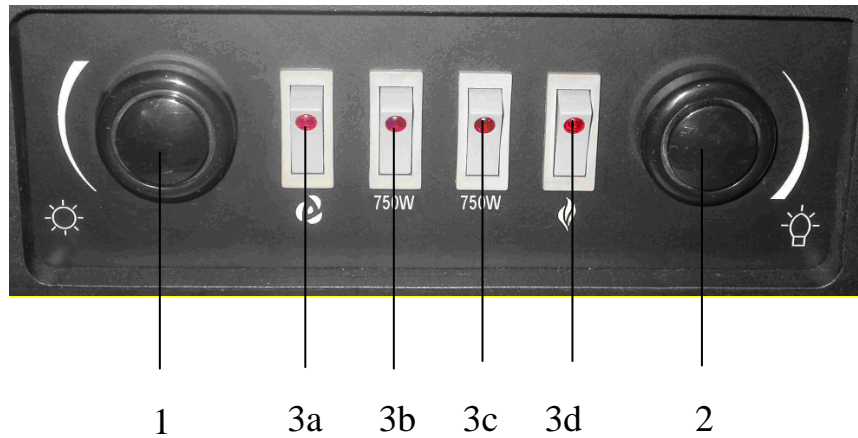
Note

- ◆ In order to avoid a hazard due to inadvertent resetting of the thermal cutout, this appliance must not be supplied through an external switching device, such as a timer, or connected to a circuit that is regularly switched on and off by the utility.
- ◆ Appliance is not intended for use by people (including children) with reduced physical, sensory or mental capabilities, or lack of experience and knowledge, unless they have been given supervision or instructions concerning use of the appliance by a person responsible for their safety.

Children should be supervised to ensure that they do not play with the appliance.

TO RESET TEMPERATING LIMITING CONTROL DISCONNECT
POWER USING PLUG CAP OR MAIN SWITCH FOR 5 MIN

CAUTION: TO PREVENT ELECTRIC SHOCK MATCH WIDE BLADE OF
PLUG TO WIDE SLOT, FULLY INSERT.”



Control Guide

- 1) Thermostat
- 2) Fire Adjustable Switch
- 3) Switches
 - a. Fan (without heating)
 - b. Heat 750W
 - c. Heat 750W
 - d. Fire effects

Operating Instructions

- ◆ Insert Plug Into Socket

The main switch for the power supply is at the right bottom of the hot air outlet on the front of the stove. The stove will work when the button is switch to the “ON” position. A red indicator light will be lit to indicate that the stove is ON.

Functions

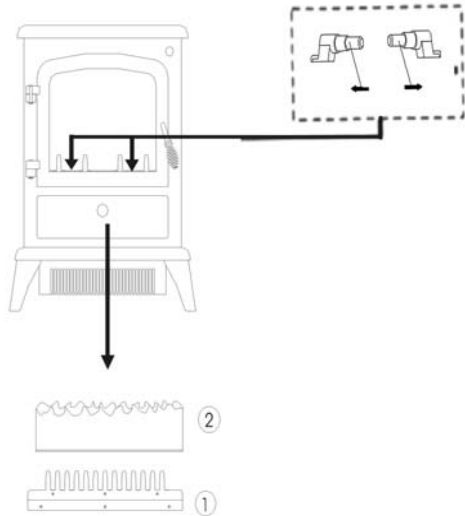
- ◆ Open the control panel cover.

- ◆ Select the desired function:
 - Fire effect (3d)
 - Fan (3a) (without heating)
 - Half power 750w (3a + 3b)
 - Full power 1500w (3a + 3b + 3c)
 - Heat and fire effect (3a + 3b + 3c + 3d)
- ◆ Fan function is necessary to activate heat functions.
Without fan the heater cannot run.
- ◆ Increase or decrease the fire effect by rotating the fire adjustable switch (2) until desired intensity.
- ◆ To adjust the permanent temperature:
 - Turn the thermostat (1) clockwise to the biggest point.
 - When the room temperature is comfortable, turn the switch (1) counter clockwise to break point and keep the button position.
 - The function can keep necessary room temperature and also save energy.

Changing Light Bulbs (See picture below)

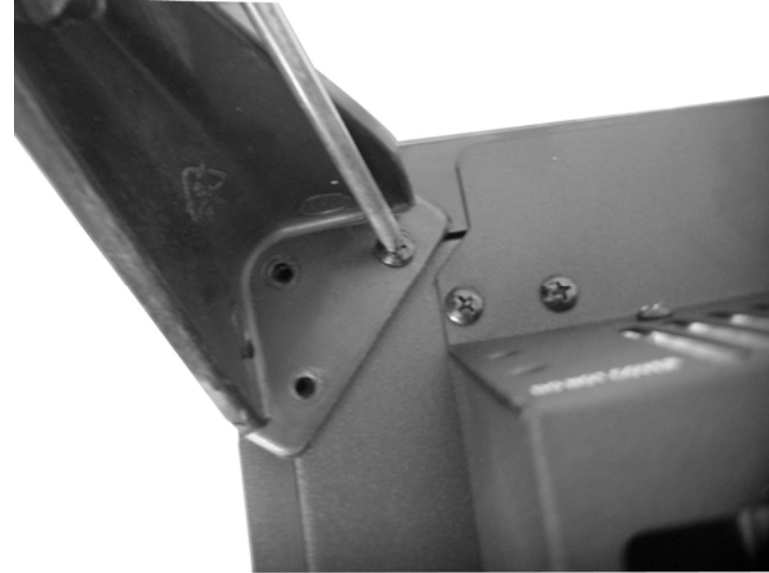
CAUTION: Sharp edges!

- ◆ Loosen the three screws at the front of the flame effect element
- ◆ Lift up the log bed decoration. Two G9 lights are located under the fuel bed.
- ◆ Replace the lights with a 25W G9 light.
- ◆ To reassemble, follow previous instructions in reverse order.



Fitting the feet

1. Remove leg from the bag, and locate and line up holes in the leg, with holes in the underside of the stove body. Repeat the above for the other three legs.



2. With use of a screwdriver, secure leg with the three screws provided (The screw is with the manual) . Repeat the above for the other three legs.

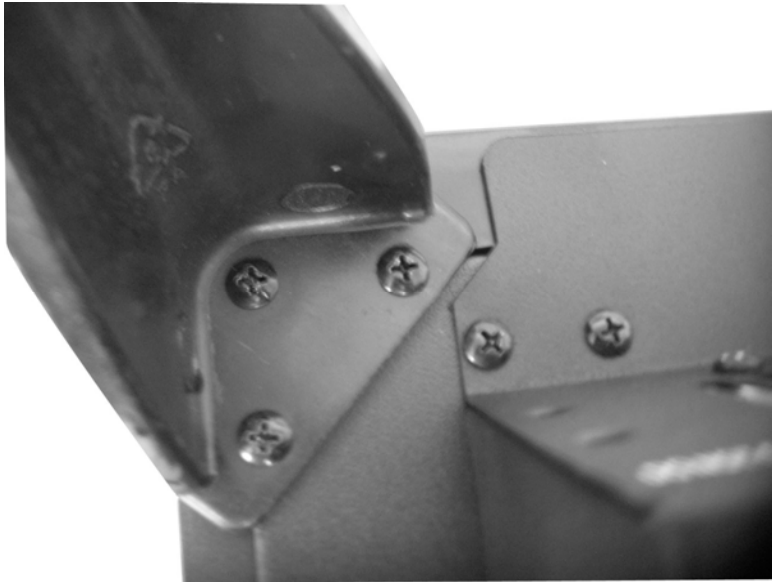
Maintenance And Cleaning

- ◆ Switch off and unplug the stove, and ensure it's perfectly cooled before cleaning or doing maintenance work.
- ◆ Wipe the stove with a cloth to remove the dust.
- ◆ Never use abrasives or detergents to clean.

Environment



Do not dispose of electrical appliances as unsorted municipal waste, use separate collection facilities. Contact your local government for information regarding the collection systems available. If electrical appliances are disposed of in landfills or dumps, hazardous substances can leak into the groundwater and get into the food chain, damaging your health and well-being.



3. This is how the leg looks when attached correctly.



4. This is how the stove will look when all four legs are in place.